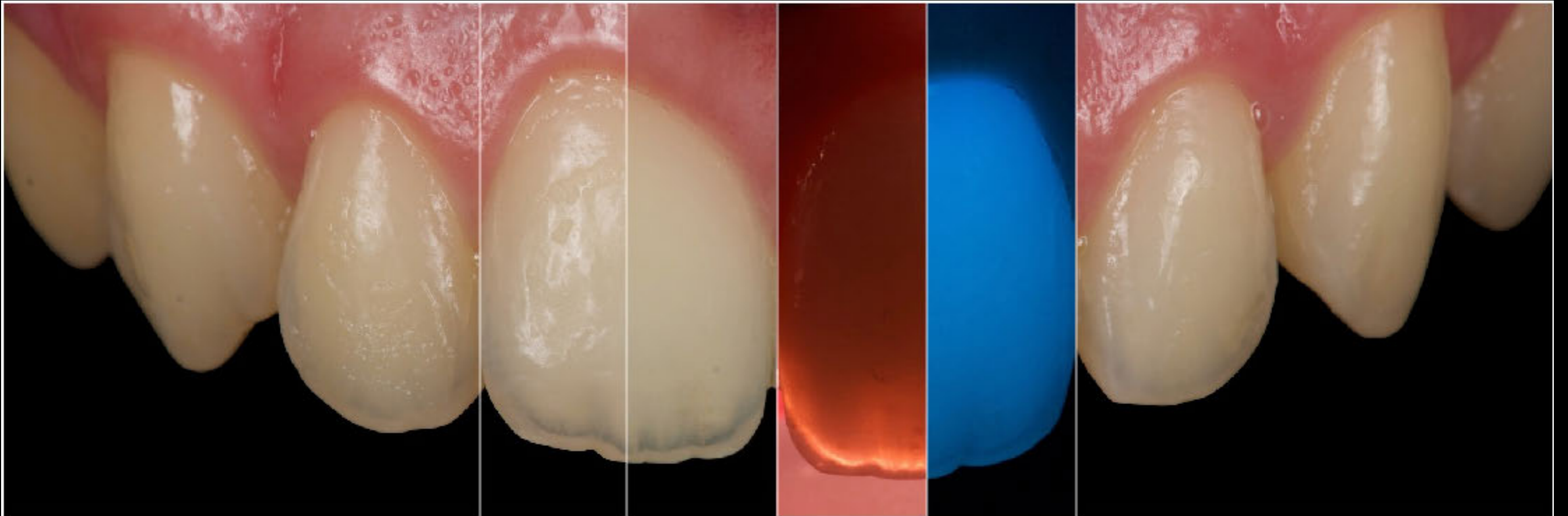


javiertapiaguadix^e ddscgartist

mastering shade analysis



29th & 30th June 2018
L O N D O N



mastering shade analysis

an intensive two-day program searching for the excellence in the analysis and comprehension of color in dentistry, for clinicians and technicians



The Bio-Emulation approach as written in structural analysis and visual synthesis defined the new bases to consider for replication of natural tooth structures with composite resin. The penta_laminar concept represents the ultimate implementation of this philosophy: analysing different ageing stages to build a dynamic shade concept that adapts to nature. However, feasibility of application of this concept is compromised by it's intrinsic complexity, not accessible to all clinical conditions. By analysing the key factors of natural structure's ageing process and applying this knowledge to the material selection, it is possible to simplify techniques to make them approachable in all situations.

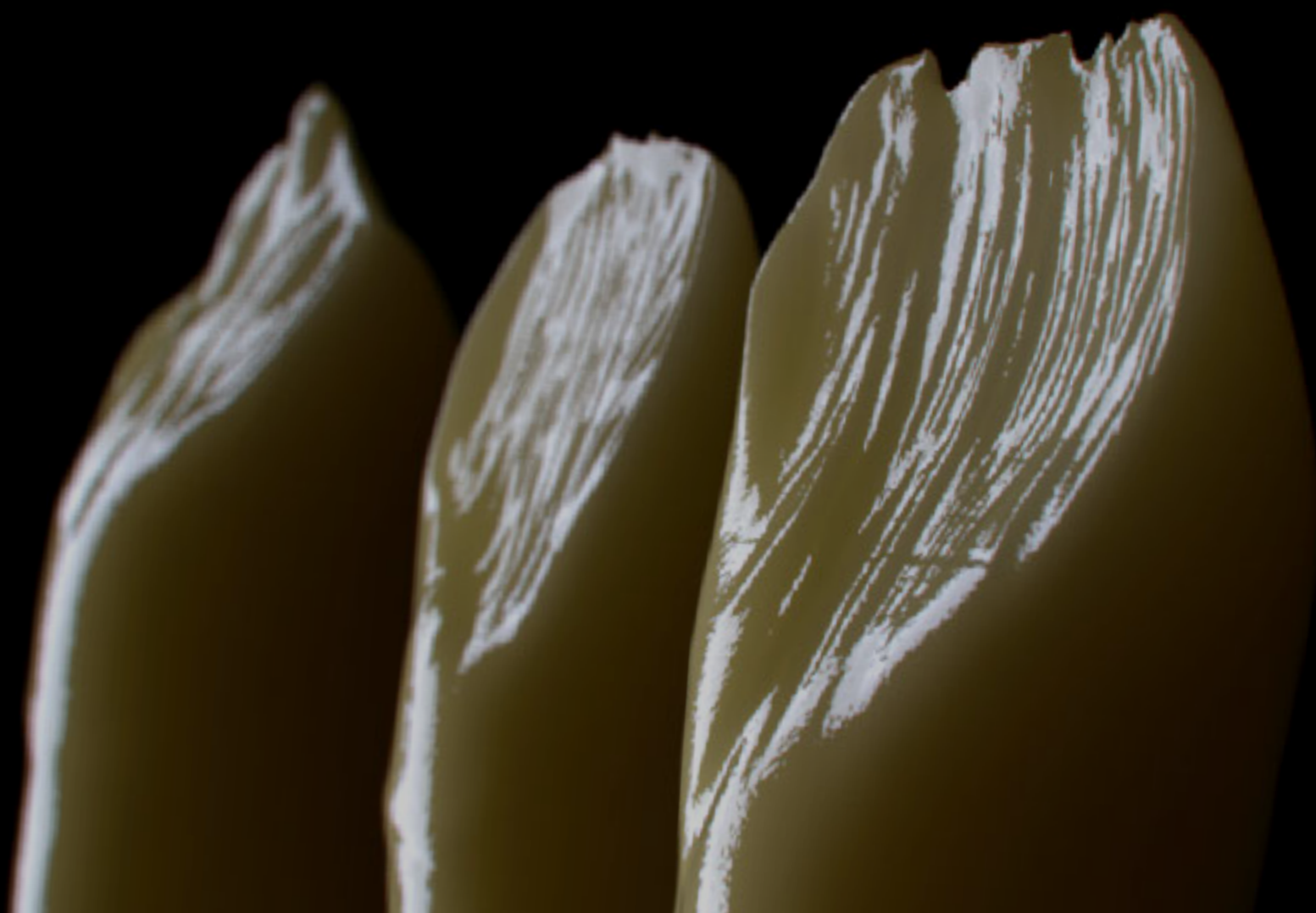
Achievement of aesthetic restorations that resemble natural teeth represent a great challenge for both dentists and technicians. Obtaining optimal results with the minimum number of try-in tests or repetitions necessarily implies performing a systematic and exhaustive shade analysis. Advanced photographic techniques need to be used for this task, including different kinds of illumination and precise calibration of RAW files.

Defining proper shade selection strategies for both composites and ceramics is of paramount importance for our daily work. The Bio-Emulation approach provides specific tools designed to increase dramatically the accuracy of our shade matching, including the custom_eyes shade tabs as well as the "state of the art" eLAB protocol, which changes the classic subjective approach into a new completely objective one with the maximum predictability.

Ultimately, a successful treatment will always be the outcome of a good communication with patient and perfect teamwork between dentist and technician.

*look deep into nature, and then you will
understand everything better*

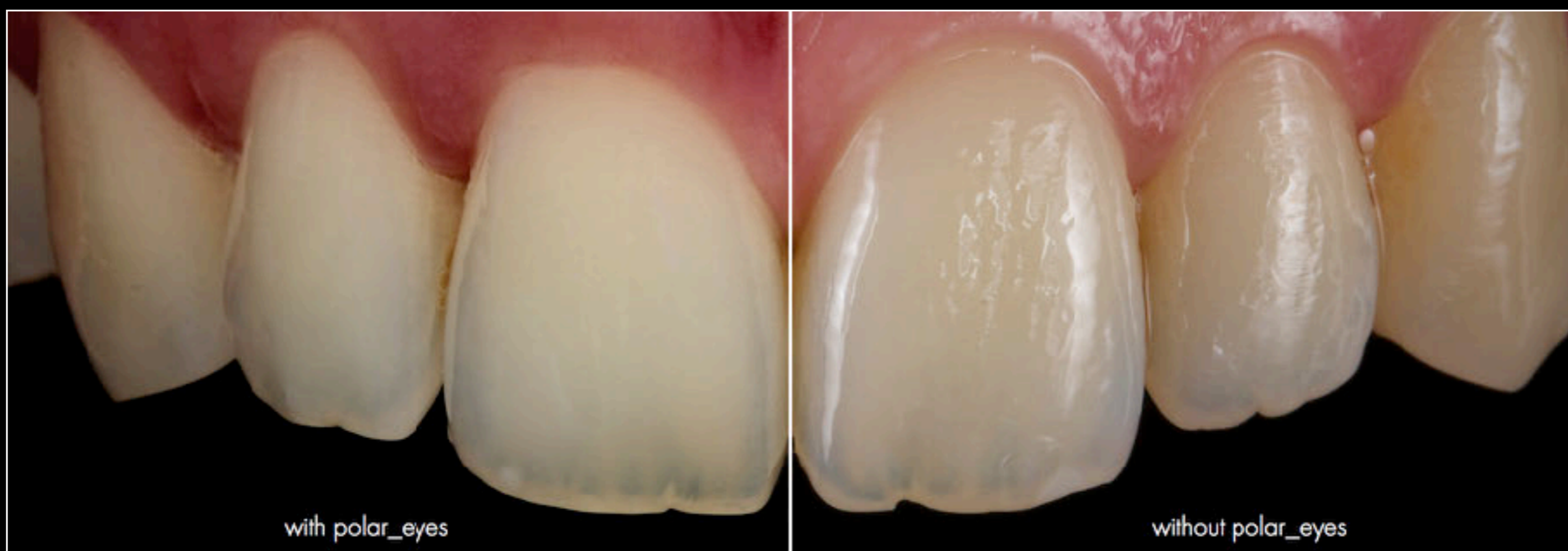
Albert Einstein



program
Day_One

theoretical program - part 1

- *Mastering Color:*
 - Basic color parameters: hue, chroma y value.
 - Translucency as value modulator.
 - Texture as value modulator.
 - Opalescence and fluorescence: myths and legends.
- *Bio-Emulation: a new approach to color in dentistry:*
 - Optical properties of dental structures.
 - 3D anatomy: enamel vs dentin.
 - Understanding dental tissues ageing process.
- Dynamic light observation.
- The penta_laminar concept: a dynamic layering approach.
- Practical Implementation: is it possible to simplify?
- Emulating nature with a limited amount of shades. Simplification criteria.
- Clinical application.
- The tri_laminar concept: a simplified vision for posterior restorations.



theoretical program - part 2

- Introduction to digital photography
- The photography equipment: body, lens & illumination systems. Recommendations for dental photography,
- Revisiting essential concepts for dental photography: shutter speed, aperture, depth of field, ISO and white balance.
- Digital formats: RAW vs JPEG.
- Exposure control through histogram information.
- Optimising settings to maximise the information recording: understanding photography as capture-processing binomial.
- The digital workflow: calibration and preset creation for batch-processing.
- Bio-Emulation: polar_eyes, fluor_eyes, white_balance & axis.
- Bio-Emulation: advanced photography protocol.
- eLAB®: the revolution in shade management: capture - calibrate - create



eLABor_aid: a new approach
to digital shade management

powered by Bio-Emulation[®]



saschahein



javiertapia



panosbazos

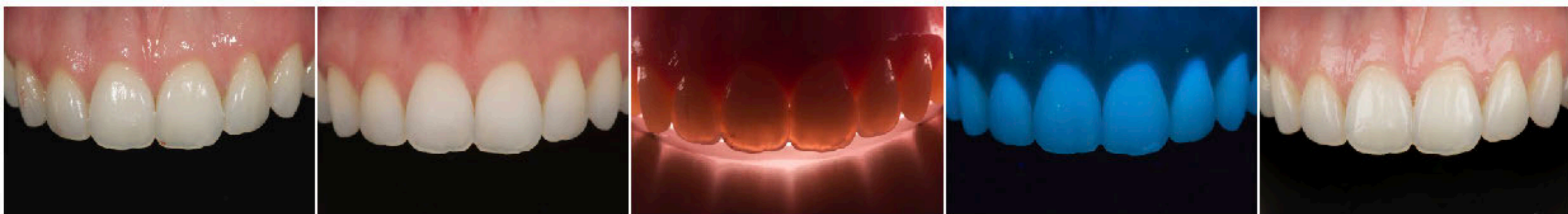


program
Day_Two

practical program

- Advanced photo protocol step by step:
 - twin flash
 - polar_eyes
 - transiluminación
 - fluor_eyes
 - difusores
- White balance calibration with white_balance™ card.
- Color profile creation.
- Photography protocol for eLAB® technique.
- Digital workflow with Adobe Bridge & Camera Raw.
- Preset creation in Camera Raw.
- Photography calibration for eLAB® technique.
- Digital color measurement.
- Working models photography.
- Artistic photography.

advanced dental photo protocol 



twin flash

polar_eyes

transmission

fluor_eyes

bouncers

practical program
material

Participants must bring their own photography equipment (DSLR or Mirrorless, Marco Lens, Flash System & optional accessories like diffusers, polar_eyes, etc. if available).

Additionally they need to bring a laptop (Mac or PC) with Adobe Photoshop & Adobe Bridge installed (ideally latest version). They can download a free trial version from www.adobe.com or register for a Creative Cloud photography plan.





Javier Tapia Guadix was born in 1978 in Madrid, Spain. He finished dental school at the European University of Madrid in 2003. Working then as associate professor in the prosthetics department during 2004.

In 2005 he started his career as professional computer graphics artist, focused on illustration, animation and application development. He founded the company Juice - Dental Media Design for this purpose.

He received the Collegiate Merit Award by the Spanish College of Dentists from the 1st Region in 2005, for his collaboration in the commission of new technologies.

In 2011 he founded together with Panagiotis Bazos and Gianfranco Politano the Bio-Emulation group.

He actively collaborates with several universities across Europe and is member of GC Restorative Advisory Board.

In 2014 he became official reviewer for the Journal of Clinical and Experimental Dentistry. Then in 2017 he became official reviewer for the International Journal of Esthetic Dentistry.

Javier works in his private practice in Madrid, focused on restorative dentistry and aesthetics.

He is an international lecturer with participation in more than 200 congress, hands-on courses and live courses.

He published several articles in restorative dentistry, dental photography and computers in dentistry.



practical_info

registration

£850

Maximum 10 places



29th & 30th June 2018
L O N D O N

location

E line orthodontics
21 Devonshire street
London W1G 6PB



contact

Melissa Hall
+44 207 467 5700
info@elineorthodontics.co.uk